

## INDOOR COLLECTION | Tricot

Item code: TRC

| Tecnica: tessuto a mano su telaio

| Weaving: handloom

| Filato: Lana e viscosa

| Yarn: Wool and viscose

| Peso / mq: 2,5 kg

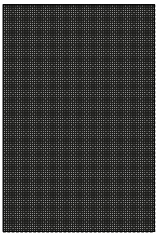
| Weight / sqm: 2,5 kg

| Spessore: 8 mm

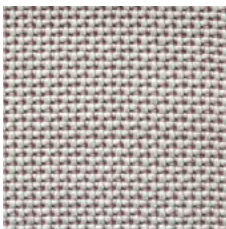
| Thickness: 8 mm

| Disponibile anche su misura

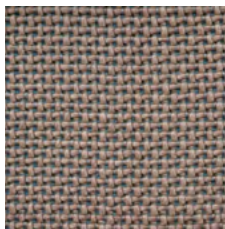
| Available in custom sizes



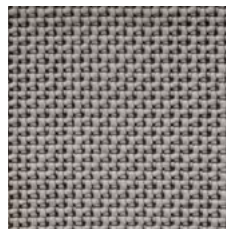
200 x 300 cm



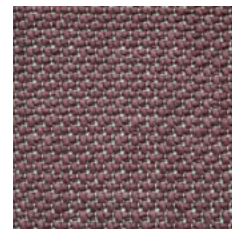
TR 01



TR 02



TR 03



TR 04

| Handmade in India



Class 23 Domestic heavy  
EN ISO 10874



Thermal resistance  
EN 14041 (R+L+T)  
EN 1307 (T)  
ISO 8302



Electrical behaviour  
Antistatic floor covering  
EN 14041 (R+L+T)  
EN 1815 (R+L)  
ISO 6356 (T)



Luxury class LC4  
EN ISO 1307 (T)  
EN ISO 1425 (T)



Slip resistance  
EN 14041 (R+L+T)  
EN 13893



CE mark regulation  
DIR. 89/06/EE C

I dettagli tecnici o di prodotto di cui sopra, sono stati definiti al momento della sua pubblicazione. Potrebbero verificarsi piccole variazioni di colore e dimensioni. Warli si riserva il diritto di modificare i materiali, le dimensioni e le caratteristiche senza notifiche.

The above technical and product details were provided at the moment of the publication. Small variations in colour and size may occur. Warli reserves the right to modify the materials, dimensions and/or characteristics of its products without prior notice.