

PLEIN SUD COLLECTION | Loop

Item code: LOOP

| Tecnica: tessuto a mano su telaio

| Filato: 100% polipropilene

| Peso / mq: 2,5 kg

| Spessore: 12 mm

| Resistente ai raggi UV e intemperie

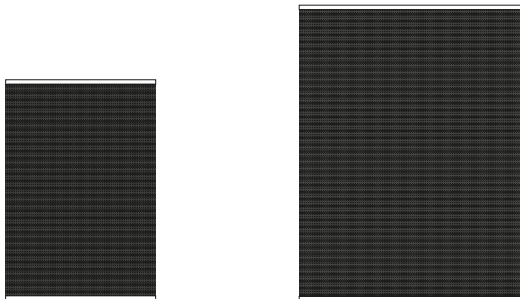
| Weaving: handwoven

| Yarn: 100% polypropylene

| Weight / sqm: 2,5 kg

| Thickness: 12 mm

| UV and weather resistant

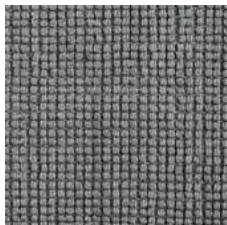


200 x 300 cm

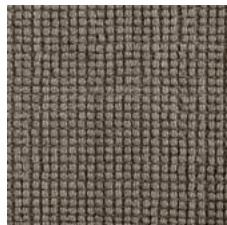
300 x 400 cm

| Disponibile anche su misura

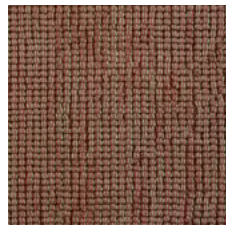
| Available in custom sizes



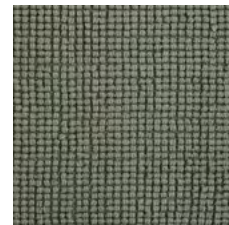
LG 01



EG 01



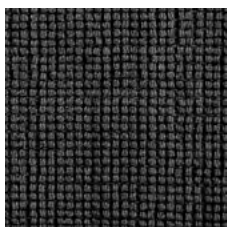
TE 01



VV 01



AQ 01



DG 01

| Handmade in India



Class 23 Domestic heavy
EN ISO 10874



Thermal resistance
EN 14041 (R+L+T)
EN 1307 (T)
ISO 8304



Electrical behaviour
Antistatic floor covering
EN 14041 (R+L+T)
EN 1815 (R+L)
ISO 6356 (T)



Luxury class
EN ISO 1307 (T)
EN ISO 1425 (T)



Light fastness
EN ISO 105-B02
EN ISO 1307 (T)



Suitability for use
in humid condition
EN 1307 (T)



CE mark regulation
DIR. 89/06/EE C