

PLEIN SUD COLLECTION | Mirasol

Item code: MRS

| Tecnica: tessuto a mano su telaio

| Filato: 100% polipropilene

| Peso / mq: 1,8 kg

| Spessore: 10 mm

| Resistente ai raggi UV e intemperie

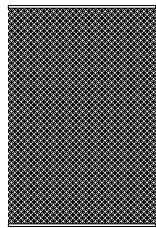
| Weaving: handwoven

| Yarn: 100% polypropylene

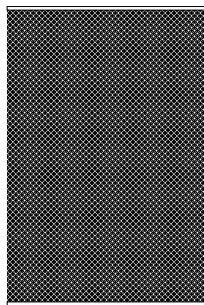
| Weight / sqm: 1,8 kg

| Thickness: 10 mm

| UV and weather resistant



200 x 300 cm



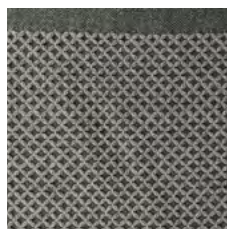
300 x 400 cm

| Disponibile anche su misura

| Available in custom sizes



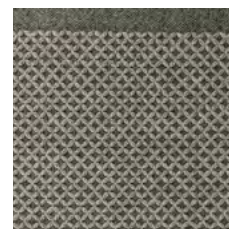
MS 01



MS 02



MS 03



MS 04



MS 05

| Handmade in India



Class 23 Domestic heavy
EN ISO 10874



Thermal resistance
EN 14041 (R+L+T)
EN 1307 (T)
ISO 8304



Electrical behaviour
Antistatic floor covering
EN 14041 (R+L+T)
EN 1815 (R+L)
ISO 6356 (T)



Luxury class
EN ISO 1307 (T)
EN ISO 1425 (T)



Light fastness
EN ISO 105-B02
EN ISO 1307 (T)



Suitability for use
in humid condition
EN 1307 (T)



CE mark regulation
DIR. 89/06/EE C